



INFO PACKET

CHECK-IN

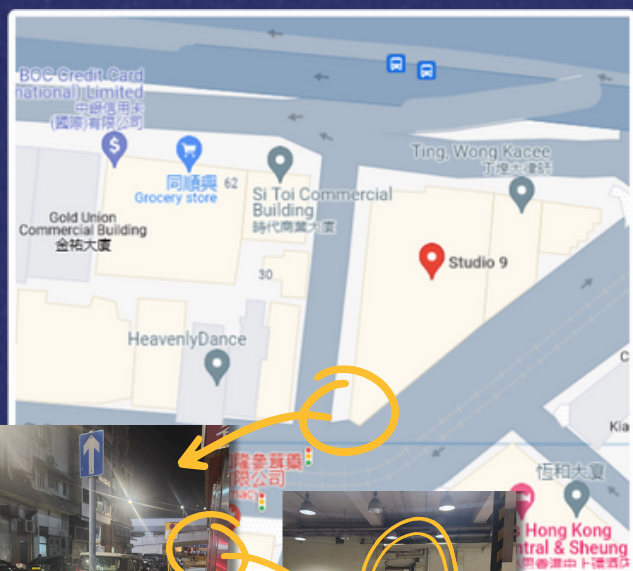
- Check-in is available every night at the party venue (check the schedule for location and time).
- There will also be late check-in available at Rebecca's Dancing Studio on **Saturday 12pm**.
- Please save the **QR code** sent to your email to show to check-in staff.
- If you haven't settled payment, please prepare cash. (please try and pay in advance though)
- If you haven't received a QR code or lost it, just let our staff know your Ticket No or email address and they will register you manually.

PARTIES

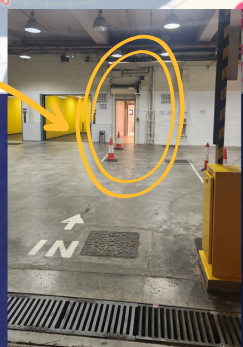
LOCATIONS

STUDIO 9

8TH FLOOR, 9 DES
VOEUX RD W, SHEUNG
WAN



ENTRANCE
(AFTER 7PM)



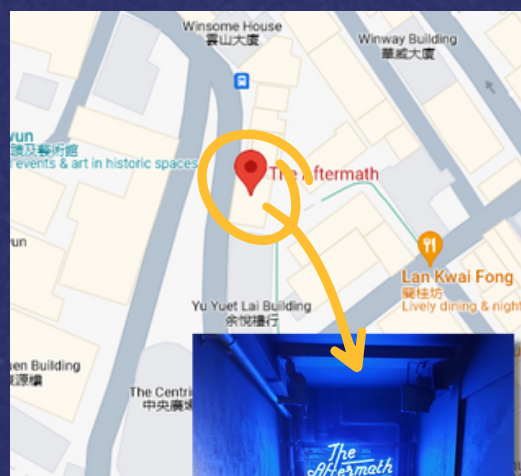
DANCETRINITY

8TH FLOOR, FUNG WOO
CENTRE, 279 DES VOEUX RD
CENTRAL, SHEUNG WAN



THE AFTERMATH

SUNNY BUILDING, LOWER
GROUND FLOOR, 57-59
WYNDHAM ST, CENTRAL



THEMES



SCHEDULE

FRIDAY NIGHT WARMUP

STUDIO 9

VINYL NIGHT

TIME	EVENT
8:00PM	DOORS OPEN, SOCIAL DANCE
9:15PM	TEACHER'S JAM
10:30PM	GAME - SPEED SHIM SHAM!
12:00PM	PARTY END

SATURDAY NIGHT MAIN EVENT

STUDIO 9

NWSD - SWINGTET

TIME	EVENT
12:00PM	LATE CHECK-IN @ REBECCA'S DANCING STUDIO
12:00PM	LEVEL AUDITION @ REBECCA'S DANCING STUDIO
1:00PM - 6:00PM	WORKSHOPS
8:15PM	DOORS OPEN, SOCIAL DANCE + DJ
8:30PM	M&M PRELIMS
9:15PM	TEACHER'S INTRO
9:20PM	BAND 1ST SET
10:00PM	DJ SOCIAL
10:45PM	RHYTHM HOPPERS PERFORMANCE
11:00PM	M&M FINAL
11:10PM	BAND 2ND SET
12:00AM	SHOW TIME
12:20AM	GROUP PHOTO
1:00AM	DOORS CLOSE
1:15AM	AFTER-AFTER PARTY @ THE AFTERMATH

SUNDAY NIGHT AFTER PARTY

DANCETRINITY

NWSD - QUARTET

TIME	EVENT
12:00PM - 6:00PM	WORKSHOPS
8:45PM	DOORS OPEN, SOCIAL DANCE + DJ
9:15PM	BAND 1ST SET
10:00PM	SOCIAL DANCE + DJ
10:20PM	SHOW TIME
10:30PM	BAND 2ND SET
11:45PM	SURVIVOR PHOTO AND DOORS CLOSE
12:00AM	AFTER-AFTER PARTY @ THE AFTERMATH

PARTY GUIDELINES

1. We are an inclusive community that respects diverse dancers and cultures
2. Dance Safely (definitely no aerials on social floor)
3. Any form of violence or sexual language is not allowed
4. You don't need to film every performance, we will be filming, enjoy the show!
5. Keep the space tidy by picking up your own trash.
6. Any issues, check with our safe space officers, they can be found at the front desk.

SAFE SPACE

SAFE SPACE / EQUITY TEAM

JANE



MENG



STEFAN



ELAINE



DORIS

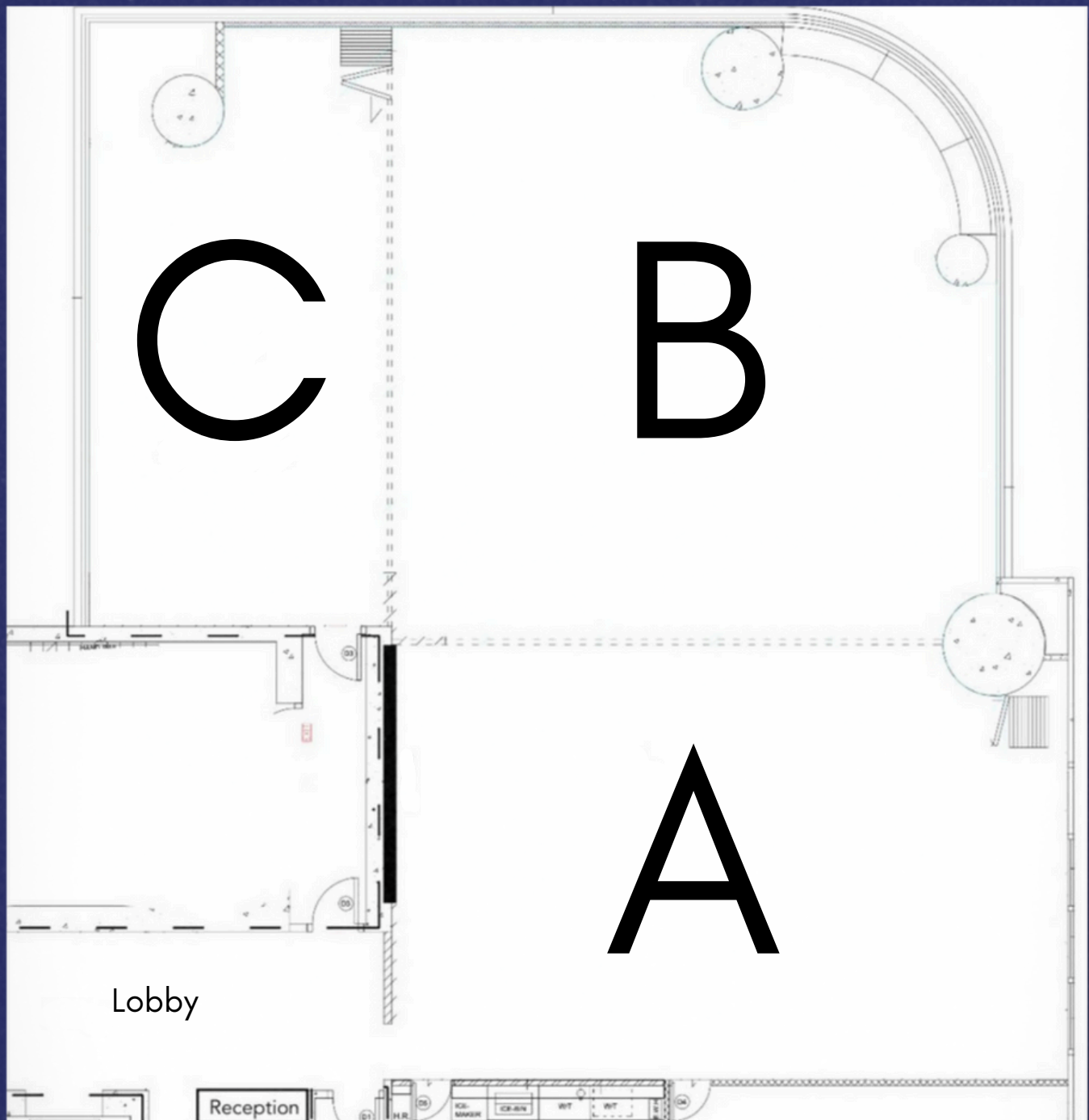


If you need help from our team, please
reach out to any of these people



PARTIES

STUDIO 9 FLOOR PLAN



CLASSES

SATURDAY - SUNDAY

LOCATIONS

TRIO SPIN

REBECCA'S DANCING STUDIO

SHEUNG WAN, QUEEN'S ROAD
CENTRAL, 228, ENTERPRISE
BUILDING, ROOM 504-505

18 FLOOR, 361 QUEEN'S ROAD
CENTRAL NAN DAO COMMERCIAL
BUILDING, SHEUNG WAN



AUDITION	REBECCA'S DANCING STUDIO
BLUE	REBECCA'S DANCING STUDIO
PURPLE/BLUE	TRIO SPIN
RED	REBECCA'S DANCING STUDIO

CLASSES

SCHEDULE

Audition is **MANDATORY** for Red Level.

We are keeping Purple/Blue level small for more personal feedback and learning

REBECCA'S
DANCING STUDIO

TRIO SPIN

TIME	RED	PURPLE/BLUE
12:00PM – 1:00PM	LEVEL AUDITION	
1:15PM – 2:15PM	Soochan + Young Sugar Push Mastery	Meti + Nathan Leading and Following
2:25PM – 3:25PM	Soochan + Young Turn it Up	Meti + Nathan Charleston
3:25PM – 3:50PM	BREAK	
3:50PM – 4:50PM	Meti + Nathan Moves from Old Movies	Soochan + Young Groove Like Never Before
5:00PM – 6:00PM	Meti + Nathan Combo/Choreo	Soochan + Young From Connection to Creation

TIME	RED	PURPLE/BLUE
12:00PM – 1:00PM	Nathan Teacher's Choice	Meti All About 'Jazz Move'
1:15PM – 2:15PM	Lisa + Fabien Fast Lindy	Nathan Teacher's Choice
2:30PM – 3:30PM	Lisa + Fabien Rhythm Changes	Soochan + Young Flow Play
3:45PM – 4:45PM	Meti Team Meti	Lisa + Fabien Compressions
5:00PM – 6:00PM	Soochan + Young CHarleston Magic	Lisa + Fabien Breaks

SATURDAY

SUNDAY

COMPETITIONS

All comps are open to registration at the front desk. Just let us know if you're interested and we'll put you on the list.

PRO-AM MIX AND MATCH \$100HKD ENTRY

A classic mix&match in the prelims where you are paired with random partner, but if you reach the final you will be dancing with one of our guest teachers!

PRELIMS	SATURDAY 8:30PM STUDIO 9
FINALS (LIVE MUSIC)	SATURDAY 11:00PM STUDIO 9

PRIZES

Top three will receive medals, and Festival Passes to various events around SEA

